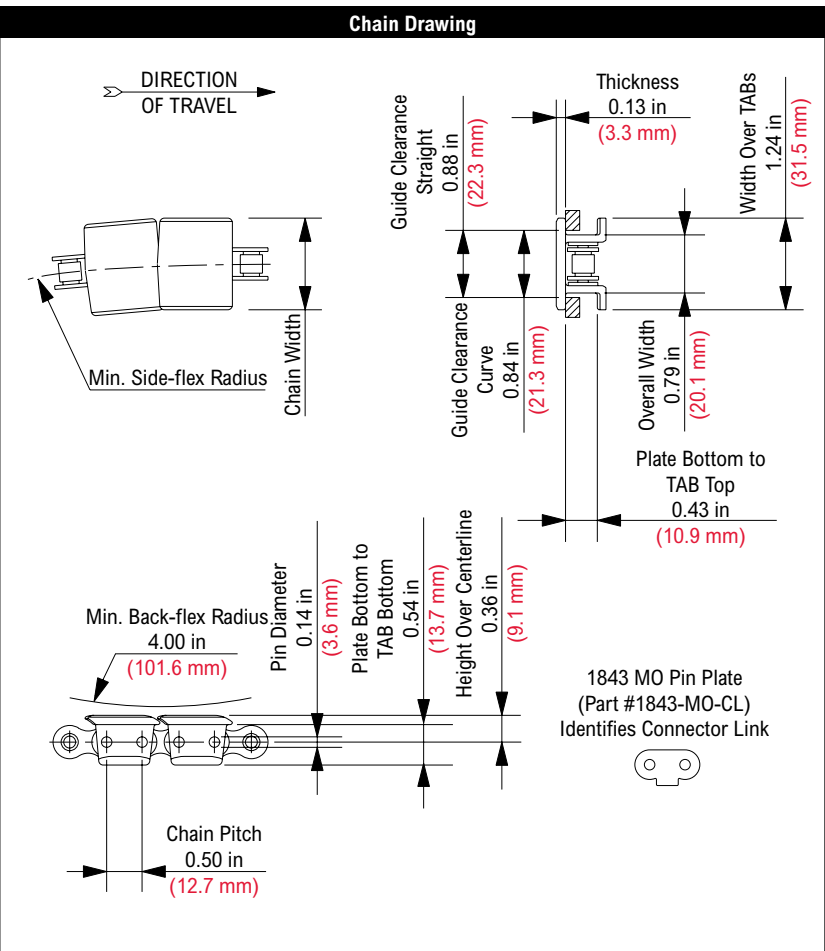




Photo shows 1843 TAB TableTop® Chain with top plates molded in Black Wear Resistant (BWR) material on Carbon Steel (S) base chain.



Chain Information						
Chain Width		Min. Side-flex Radius		Approximate Weight		
desc	in	mm	in	mm	lbs/ft	kg/m
1 1/4	1.25	31.8	10.00	254.0	0.54	0.80
1 1/2	1.50	38.1	10.00	254.0	0.56	0.83
2	2.00	50.8	10.00	254.0	0.59	0.88
2 1/4	2.25	57.2	10.00	254.0	0.61	0.91
2 5/8	2.63	66.8	10.00	254.0	0.64	0.95

Available Materials

Prefix	Top Plate Material	Base Chain Material	Temperature							Chain Strength		FDA Approval
			Fahrenheit			Celsius				lbs	N	
			min	max	dry	wet	min	dry	wet			
Standard Materials												
BWR	Black Wear Resistant	Carbon Steel	-40	180	NR	-40	82	NR	600	2,669	No	
LF	Low Friction	Carbon Steel	-40	180	NR	-40	82	NR	600	2,669	No	
Made-to-Order Materials												
AS	Anti-Static	Carbon Steel	0	180	NR	-18	82	NR	600	2,669	No	
BIR	Black Impact Resistant	Carbon Steel	-40	220	NR	-40	104	NR	600	2,669	No	
DUV	Plain Acetal Ultraviolet Resistant	Carbon Steel	0	180	NR	-18	82	NR	600	2,669	No	
ESD	Electrostatic Dissipative	Carbon Steel	0	180	NR	-18	82	NR	600	2,669	No	
FR	Flame Retardant	Carbon Steel	0	180	NR	-18	82	NR	600	2,669	No	
HP™	High Performance	Carbon Steel	-40	180	NR	-40	82	NR	600	2,669	No	
P	Chemical Resistant	Carbon Steel	0	180	NR	-18	82	NR	600	2,669	No	
PS®	Platinum Series®	Carbon Steel	-40	180	NR	-40	82	NR	600	2,669	No	
WLF	White Low Friction	Carbon Steel	-40	180	NR	-40	82	NR	600	2,669	No	
WX	Green Abrasion Resistant Polyamide	Carbon Steel	-40	220	NR	-40	104	NR	600	2,669	No	

Regulatory Information

Rexnord, TableTop, Platinum Series, HP and PS are trademarks of Rexnord Industries, LLC. All rights reserved.

Additional Notes

Stocked in 240 pitch, 10 ft (3.048 m) length strands.
 Uses 1843 carbon steel (S) base chain (Part #1843-BC).
 Chain runs on ANSI No. 40 sprockets.
 Chain breakers available.
 Chain strength is listed at room temperature. NR = Not Recommended.
 For additional material information, see material portfolio.

Part #SK12776

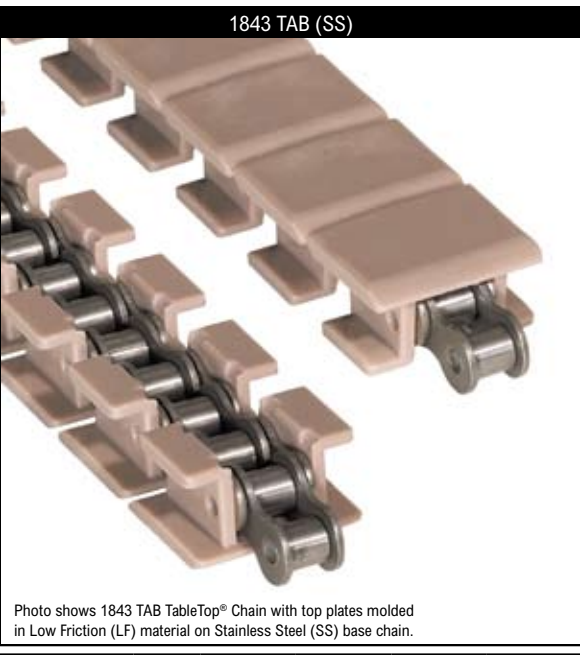
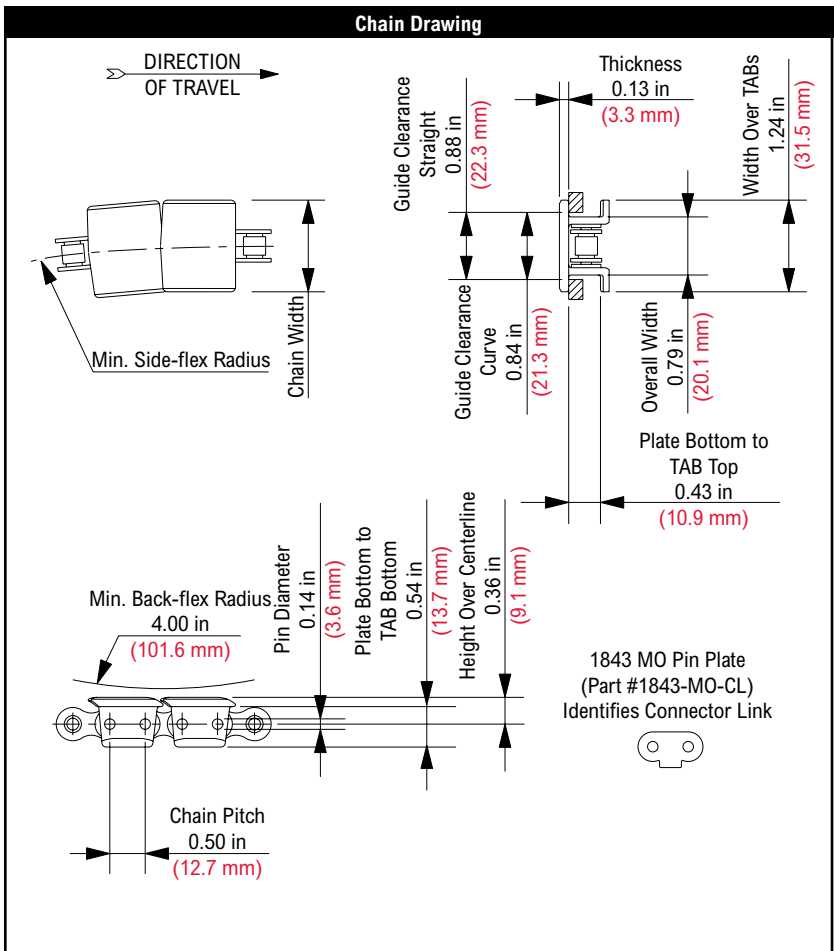


Photo shows 1843 TAB TableTop® Chain with top plates molded in Low Friction (LF) material on Stainless Steel (SS) base chain.

Chain Information						
Chain Width		Min. Side-flex Radius		Approximate Weight		
desc	in	mm	in	mm	lbs/ft	kg/m
1 1/4	1.25	31.8	10.00	254.0	0.54	0.80
1 1/2	1.50	38.1	10.00	254.0	0.56	0.83
2	2.00	50.8	10.00	254.0	0.59	0.88
2 1/4	2.25	57.2	10.00	254.0	0.61	0.91
2 5/8	2.63	66.7	10.00	254.0	0.64	0.95



Available Materials												
Prefix	Top Plate Material	Base Chain Material	Temperature							Chain Strength		FDA Approval
			Fahrenheit			Celsius				lbs	N	
			min	max	dry	wet	min	max	dry			
Standard Materials												
BWR	Black Wear Resistant	Stainless Steel	-40	180	NR	-40	82	NR	420	1,868	No	
LF	Low Friction	Stainless Steel	-40	180	150	-40	82	66	420	1,868	Yes	
Made-to-Order Materials												
AS	Anti-Static	Stainless Steel	0	180	NR	-18	82	NR	420	1,868	No	
HP™	High Performance	Stainless Steel	-40	180	150	-40	82	66	420	1,868	Yes	
P	Chemical Resistant	Stainless Steel	0	180	140	-18	82	60	420	1,868	Yes	
PS®	Platinum Series®	Stainless Steel	-40	180	150	-40	82	66	420	1,868	Yes	
WLF	White Low Friction	Stainless Steel	-40	180	150	-40	82	66	420	1,868	Yes	
WX	Green Abrasion Resistant Polyamide	Stainless Steel	-40	220	NR	-40	104	NR	420	1,868	No	

Regulatory Information

The Food and Drug Administration (FDA) accepts certain materials for direct food contact. FDA approved material is compliant to FDA 21 CFR § 177.

Rexnord, Platinum Series, HP and PS are trademarks of Rexnord Industries, LLC. All rights reserved.

Additional Notes

Stocked in 240 pitch, 10 ft (3.048 m) length strands.

Uses 1843 stainless steel (SS) base chain (Part #1843SS-BC).

Chain runs on ANSI No. 40 sprockets.

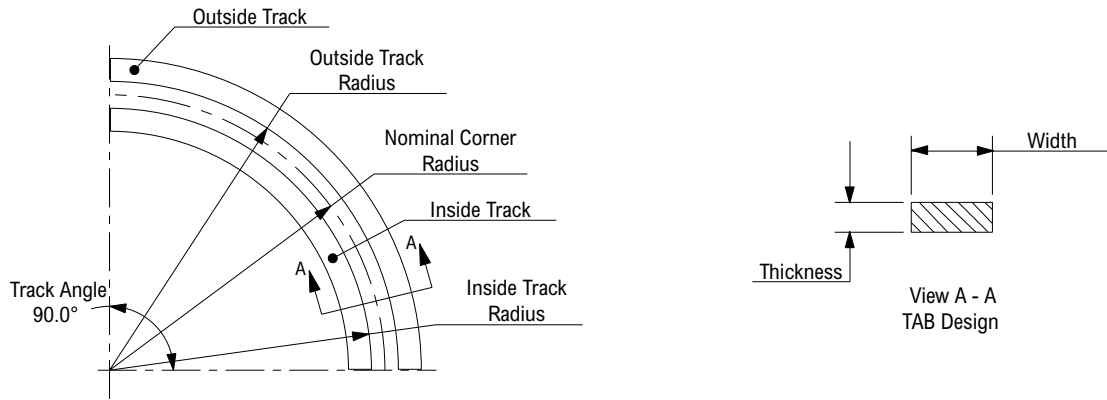
Chain breakers available.

Chain strength is listed at room temperature. NR = Not Recommended.

For additional material information, see material portfolio.

Part #SK12776

Corner Track (Two Piece)

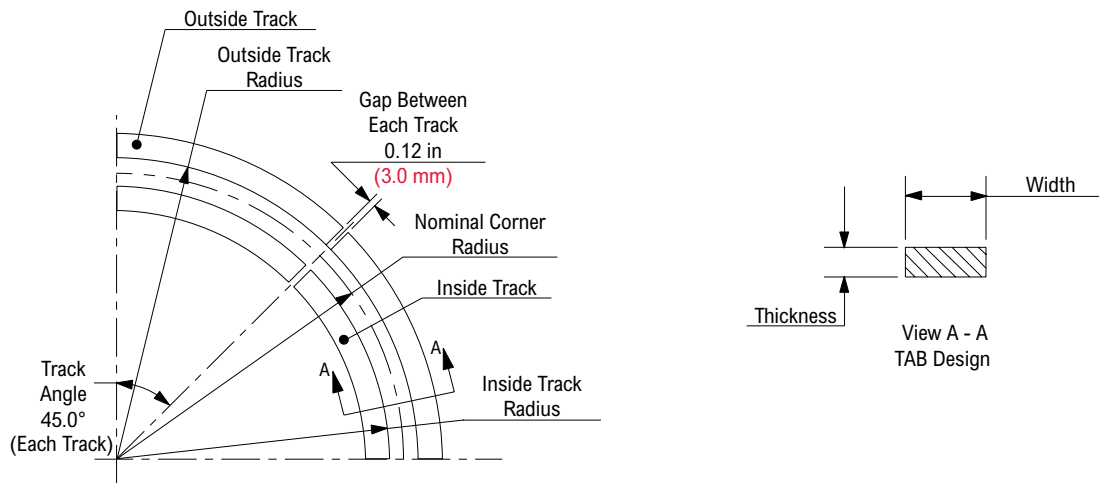


Corner track kit supplied as one 90° inside and one 90° outside track, which can be used as either carry or return.

Corner Track Kit Number	Accommodates Top Plate Width		Nominal Corner Radius		Inside Track Radius		Outside Track Radius		Thickness		Width		Material	Color	Approximate Corner Track Kit Weight	
	in	mm	in	mm	in	mm	in	mm	in	mm	in	mm			lbs	kg
TAB Design																
N18R3	3 1/4	82.6	18.0	457	17.1	434	18.9	480	0.38	9.7	1.50	38.1	Nylatron®	Black	1.28	0.58
U18R3	3 1/4	82.6	18.0	457	17.1	434	18.9	480	0.38	9.7	1.50	38.1	UHMWPE	White	1.28	0.58
N24R3	All	All	24.0	610	23.1	587	24.9	632	0.38	9.7	1.50	38.1	Nylatron®	Black	1.71	0.78
U24R3	All	All	24.0	610	23.1	587	24.9	632	0.38	9.7	1.50	38.1	UHMWPE	White	1.71	0.78

Nylatron® is a registered trademark of Quadrant Engineering Plastics Products.

Corner Track (Four Piece)

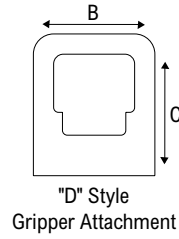
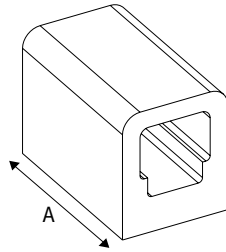
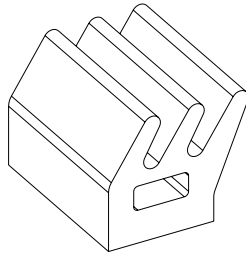


Corner track kit supplied as two 45° inside and two 45° outside track, which can be used as either carry or return.

Corner Track Kit Number	Accommodates Top Plate Width		Nominal Corner Radius		Inside Track Radius		Outside Track Radius		Thickness		Width		Material	Color	Approximate Corner Track Kit Weight	
	in	mm	in	mm	in	mm	in	mm	in	mm	in	mm			lbs	kg
TAB Design																
N30R3	All	All	30.0	762	29.2	742	30.8	782	0.38	9.7	1.50	38.1	Nylatron®	Black	2.13	0.97
U30R3	All	All	30.0	762	29.2	742	30.8	782	0.38	9.7	1.50	38.1	UHMWPE	White	2.13	0.97

Nylatron® is a registered trademark of Quadrant Engineering Plastics Products.

Gripper Attachments



Part Number	Style	Material	Color	Hardness (Shore A)	"A" Dimension		"B" Dimension		"C" Dimension	
					in	mm	in	mm	in	mm
Standard Grippers										
114-881-1	D	Neoprene	Black	40	1.23	31.2	0.75	19.1	0.88	22.4
114-882-2	J	Neoprene	White	40	1.23	31.2	0.75	19.1	0.88	22.4
Made-to-Order Grippers										
114-882-1	J	Neoprene	Black	40	1.23	31.2	0.75	19.1	0.88	22.4